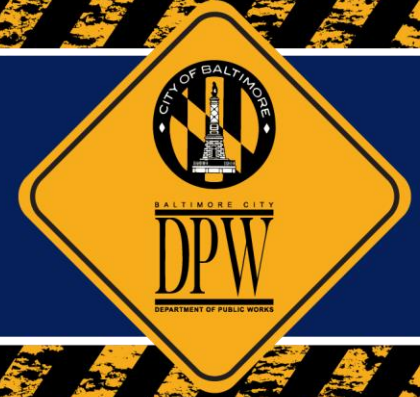


# DEPARTMENT OF PUBLIC WORKS

## Sanitary Sewer Modified Consent Decree

### Project Facts



## SC #969:

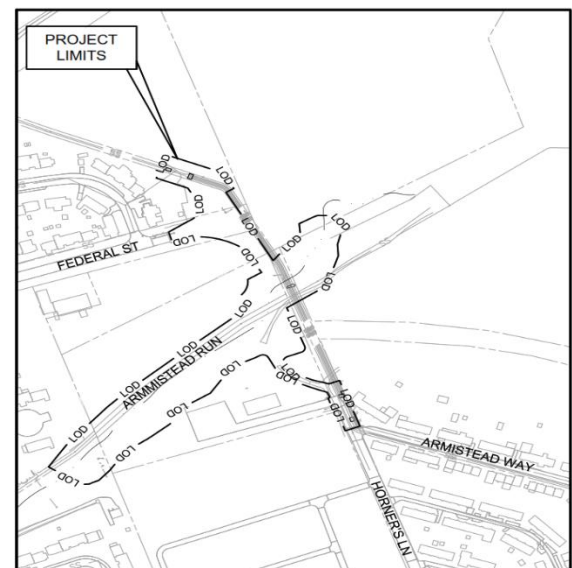
### Improvement to Horner's Lane Siphon Across Armistead Run

#### Project Purpose

To comply with the conditions of the City's Modified Consent Decree with the U.S. EPA and MDE

- To repair a sewer system that is up to 100 years old
- To prioritize pipe rehabilitation work through condition assessment
- To improve sewage flows and pipe capacity
- To reduce/eliminate sewer overflows
- To eliminate street closures due to sewer pipe collapses
- To improve water quality in streams
- To prevent sewer back-ups into private property

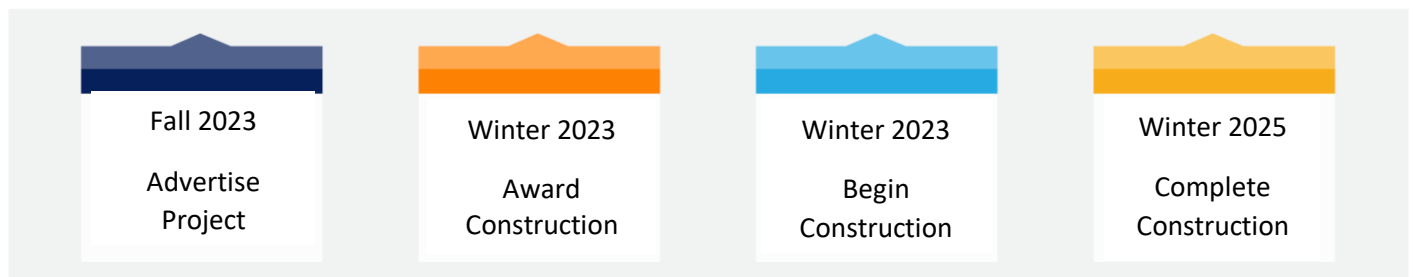
#### Project Area Map



#### Project History

An existing separate sanitary gravity sewer siphon that traverses Armistead Creek near Horner's Lane consists of an upstream and downstream siphon chamber connected to one 24-inch diameter reinforced concrete pipe (RCP) barrel and two 36-inch diameter RCP barrels, each approximately 800 lineal feet (LF) in length. The blow off/flushing assembly was originally designed to discharge to Armistead Creek but has been re-routed to a nearby sanitary sewer manhole via a 12-inch gravity relief sewer.

#### Project Schedule



# DEPARTMENT OF PUBLIC WORKS

## Sanitary Sewer Modified Consent Decree

### Project Facts



## SC #969:

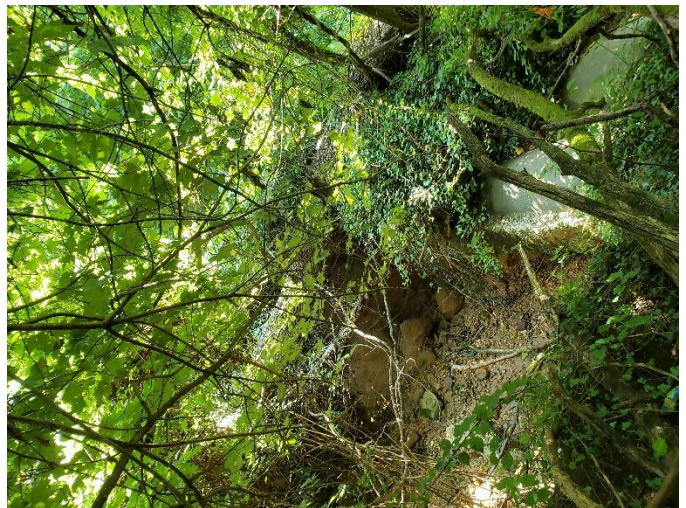
### Improvement to Horner's Lane Siphon Across Armistead Run

#### Project Updates

- Project is at 100% design phase while addressing comments from the reviews of the different agencies
- Coordination with MDE in addressing their comments pertaining to the project.
- Permits are being applied for prior to the start of the construction phase of the project
- FEMA has completed the final review of the CLOMR.
- Acquiring the proper Right-of-Entry agreements

#### Project Activities

- Rehabilitate sewers using cured-in-place pipe (CIPP) lining (~9632 LF)
- Select Borrow for Stream Stabilization (3618 CY)
- Disposal of Contaminated Soil (~3627 CY)
- Removal of debris in siphon (~653 Ton)
- Planting of 314 trees



If you have any project-related questions, please call (410) 396-4700, Monday through Friday, between 8:30 AM and 4:30 PM. Additional information and resources are also available on our website <https://publicworks.baltimorecity.gov/>

**Project Sheet link:** <https://publicworks.baltimorecity.gov/sewer-consent-decree-project-history>