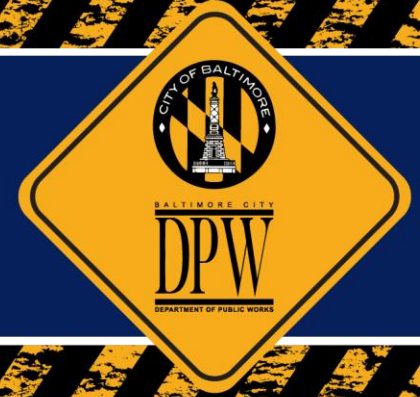


DEPARTMENT OF PUBLIC WORKS

Sanitary Sewer Modified Consent Decree

Project Facts



SC #969:

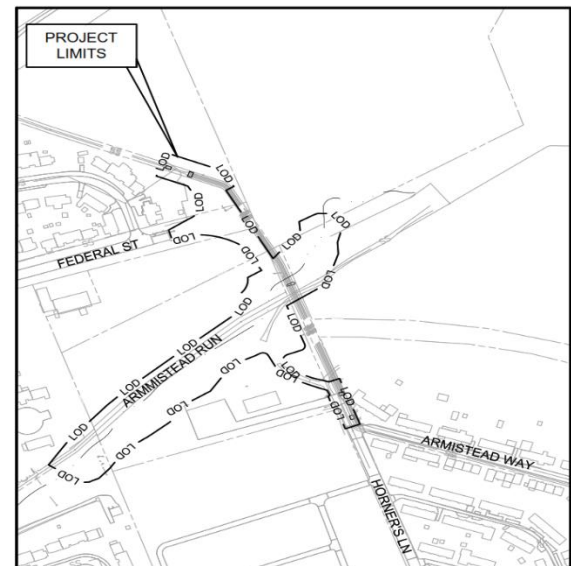
Improvement to Horner's Lane Siphon Across Armistead Run

Project Purpose

To comply with the conditions of the City's Modified Consent Decree with the U.S. EPA and MDE

- To repair a sewer system that is up to 100 years old
- To prioritize pipe rehabilitation work through condition assessment
- To improve sewage flows and pipe capacity
- To reduce/eliminate sewer overflows
- To eliminate street closures due to sewer pipe collapses
- To improve water quality in streams
- To prevent sewer back-ups into private property

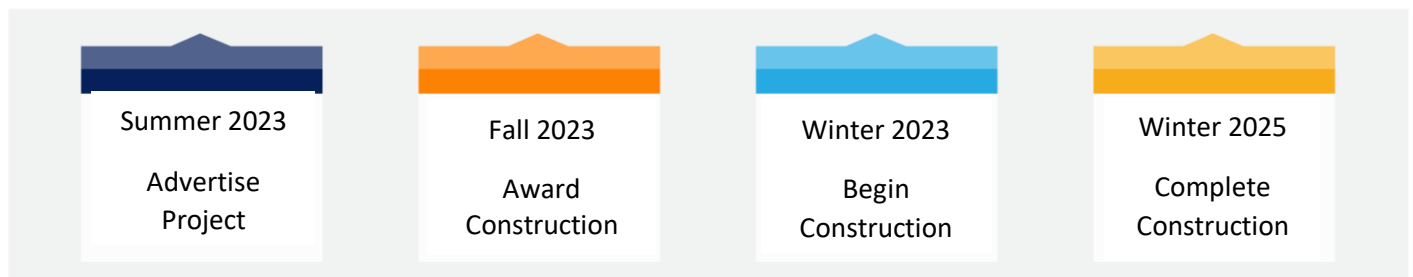
Project Area Map



Project History

An existing separate sanitary gravity sewer siphon that traverses Armistead Creek near Horner's Lane consists of an upstream and downstream siphon chamber connected to one 24-inch diameter reinforced concrete pipe (RCP) barrel and two 36-inch diameter RCP barrels, each approximately 800 lineal feet (LF) in length. The blow off/flushing assembly was originally designed to discharge to Armistead Creek but has been re-routed to a nearby sanitary sewer manhole via a 12-inch gravity relief sewer.

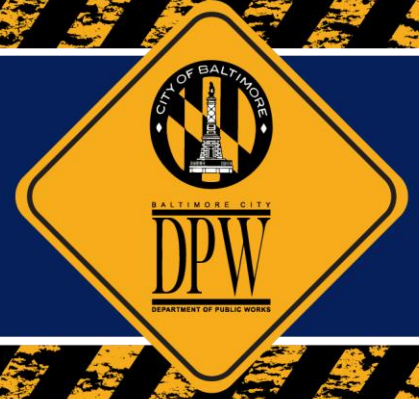
Project Schedule



DEPARTMENT OF PUBLIC WORKS

Sanitary Sewer Modified Consent Decree

Project Facts



SC #969:

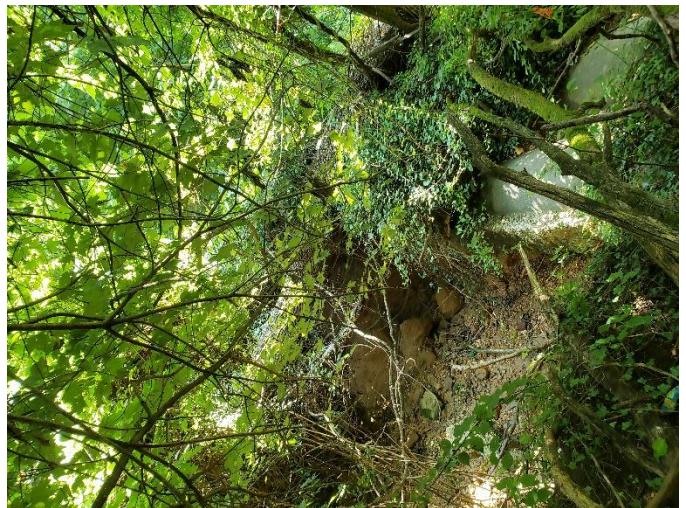
Improvement to Horner's Lane Siphon Across Armistead Run

Project Updates

- Project is at 100% design phase while addressing comments from the reviews of the different agencies
- Coordination with MDE in addressing their comments pertaining to the project.
- Permits are being applied for prior to the start of the construction phase of the project
- FEMA has completed the final review of the CLOMR.
- Acquiring the proper Right-of-Entry agreements

Project Activities

- Rehabilitate sewers using cured-in-place pipe (CIPP) lining (~9632 LF)
- Select Borrow for Stream Stabilization (3618 CY)
- Disposal of Contaminated Soil (~3627 CY)
- Removal of debris in siphon (~653 Ton)
- Planting of 314 trees



If you have any project-related questions, please call (410) 396-4700, Monday through Friday, between 8:30 AM and 4:30 PM. Additional information and resources are also available on our website <https://publicworks.baltimorecity.gov/>

Project Sheet link: <https://publicworks.baltimorecity.gov/sewer-consent-decree-project-history>