



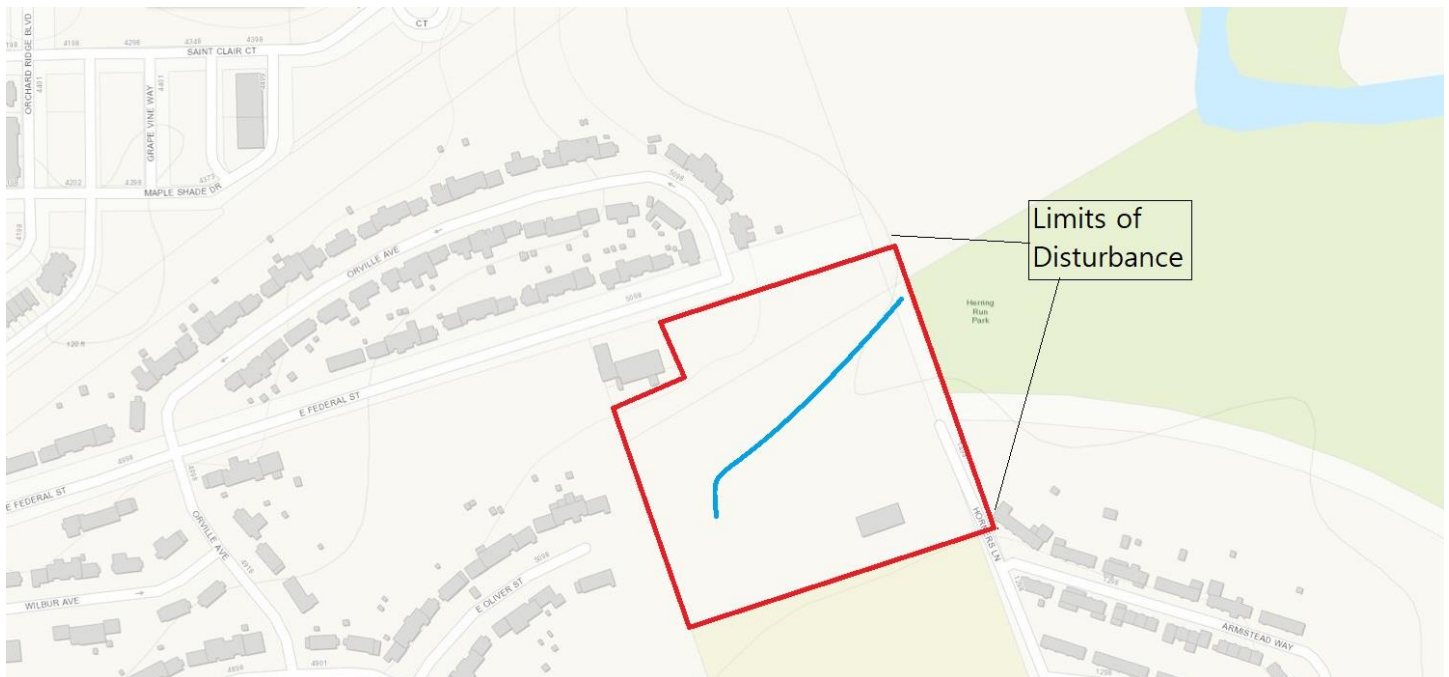
Sanitary Contract 969
(Improvement to Horner's Lane Siphon Across Armistead Run)

April 2021

To whom it may concern,

An existing separate sanitary gravity sewer siphon that traverses Armistead Creek near Horner's Lane consists of an upstream and downstream siphon chamber connected to one 24-inch diameter reinforced concrete pipe (RCP) barrel and two 36-inch diameter RCP barrels, each approximately 800 lineal feet (LF) in length. Within the siphon is a constructed blow off/flushing assembly that is valved. The blow off/flushing assembly was originally designed to discharge to Armistead Creek but has been re-routed to a nearby sanitary sewer manhole via a 12-inch gravity relief sewer.

Project Map



Below is the current project design status update:

The project is at 90% design phase while addressing the comments from the different agencies.

Environmental review comments being addressed.

Most updated boiler plate of the Office of Engineering and Construction Specifications has been revised with the most recent guidelines and specifications.

Permits are being applied for prior to the start of the construction phase of the project.

Estimated Construction Start is Fall 2021

@Printed on recycled paper with environmentally friendly soy based ink.