



## **Sanitary Contract 955 (Powder Mill Interceptor Improvements & Stream Restoration)**

September 1, 2021

To whom it may concern,

Project SC955 was given the official notice to proceed effective June 1, 2020. The project duration is approximately 18 months, resulting in an authorized finish date of late November 2021.

Below is the project construction status of SC955:

### **PROJECT LIMITS**

Sanitary Contract 955 comprises of three distinct phases of work. Phases I and II are located within the limits of Powder Mill Park with Northern Parkway to the west and Parkview Ave to the east and Elderon Ave to the north and Liberty Rd (MD-26) to the south. See Figure 1.

Phase I involves building a new interceptor sewer and Phase II involves Stream Restoration of the Powder Mill Branch. Activities for Phase I and II will occur in parallel.

Phase III is located in Leakin Park, with Windsor Mill Rd to the north and Franklintown Rd to the south. The objective of SC955 Phase III is to build a permanent access road to provide access to the 60 in sanitary sewer. See Figure 2.

Neighborhoods impacted by current work (Phase 1 & 2) of SC955: Grove Park and Howard Park.

Approximate completion of project to date is 80%.

### **UPCOMING WORK ON KENNISON AVE**

The intersection of Kennison and Bowers, where the upsized pipe installed in SC955 will connect to the pipe installed in SC921, will be paved by Baltimore City Dept of Transportation (BCDOT) after the connection is completed. The approximate completion date of the sewer work is mid-August 2021. The aforementioned connection will require the temporary deactivation of the sewer running parallel to Kennison Ave and a bypass system (consisting of black HDPE pipes) activated. Residents may have seen these bypass pipes fused and placed along the northern edge of Kennison Ave recently.

### **UPCOMING WORK IN LEAKIN PARK (PHASE III)**

Work in Leakin Park will start in late August, contingent upon completion of project SC977 in the same location. During the month of May 2021, the contractor completed surveying in the park. During the second half of August, Contractor started installing orange construction fence.



Figure 1: SC955 Phase I & II – Powder Mill Park



Figure 2: SC955 Phase III – Leakin Park

### Work in Progress

- Powder Mill Park: Thousands of feet of tree protection fence and super silt fence have been installed to protect the environment and prevent sediment transport from runoff.
- Clearing for the sewer work (Phase 1) and for the stream restoration (Phase 2), is complete.
- Approx. 1600 ft of 36 in sewer (92%), 1900 ft of 30 in diameter sewer (78%) and 140 ft of 8 in sewer have been installed.
- 11 precast manholes have been installed.
- Junction Chamber where the old 27-inch interceptor meets the new interceptor has been completed.
- Tunnel casing under Liberty Rd is complete. Carrier pipe inside the tunnel was installed late-June 2021.
- Sewer pipe to connect the tunnel to upstream and downstream manholes completed early July 2021.
- Vegetation management and replanting of trees in Powder Mill Park will start in September 2021.
- Stream restoration (Phase 2) is approximately 95% complete.
- Presence of Heavy construction vehicles, equipment and construction noise is expected. The construction hours for this project are between 7:00 AM – 5:00 PM, with occasional instances of overtime work.

We hope this provides insights for upcoming work as we strive to timely and safely complete this project. If you have any questions, you may call Indranil (Neil) Goswami at (410) 396-4700, Monday through Friday, between 8:30 AM and 4:30 PM. Additional information and resources are also available on our website

<https://publicworks.baltimorecity.gov/> .

Sincerely,

Angela Cornish  
 Construction Project Supervisor II  
 DPW, Office of Engineering & Construction  
[angela.cornish@baltimorecity.gov](mailto:angela.cornish@baltimorecity.gov)

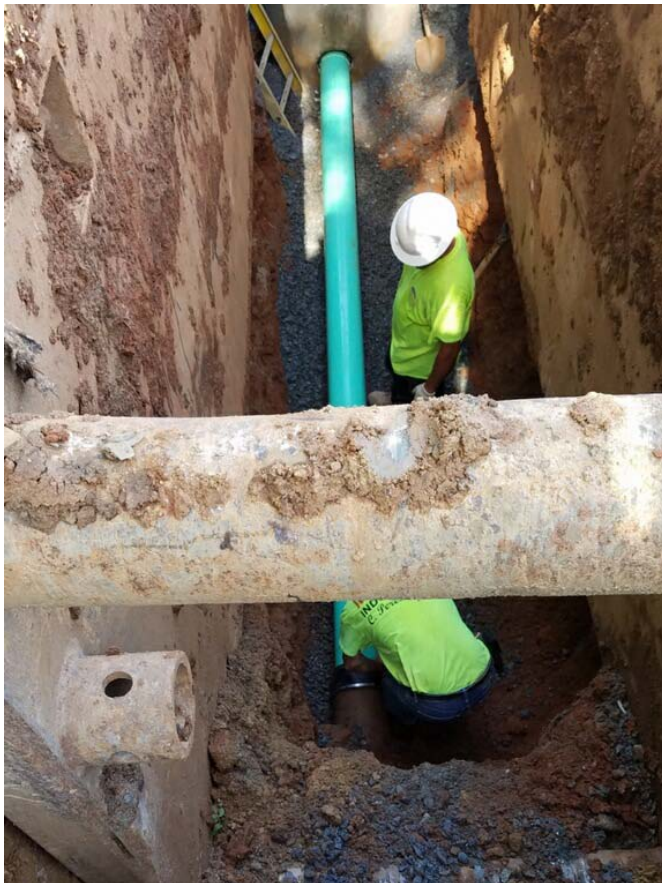
Below are some pictures to highlight work ongoing.



**8 in sewer at MH 26**



**Stream Meander at Sta 19+50**



**Installing 8 in PVC Sewer**



**Confluence of Main Channel and Channel 2**