



## **Sanitary Contract 955 (Powder Mill Interceptor Improvements & Stream Restoration)**

May 1, 2022

To whom it may concern,

Project SC955 was given the official notice to proceed effective June 1, 2020. The original project duration is approximately 18 months, resulting in an authorized finish date of late November 2021. There have been some unavoidable and unforeseen delays in the project execution, resulting in an anticipated completion date of April 30, 2022.

Below is the project construction status of SC955:

### **PROJECT LIMITS**

Sanitary Contract 955 comprises of three distinct phases of work. Phases I and II are located within the limits of Powder Mill Park with Northern Parkway to the west and Parkview Ave to the east and Elderon Ave to the north and Liberty Rd (MD-26) to the south. See Figure 1.

Phase I involved building a new interceptor sewer and Phase II involved Stream Restoration of the Powder Mill Branch. Activities for Phase I and II occurred in parallel.

Phase III is located in Leakin Park, with Windsor Mill Rd to the north and Franklinton Rd to the south. The objective of SC955 Phase III is to build a permanent access road to provide access to the 60 in sanitary sewer. See Figure 2.

Neighborhoods impacted by ongoing work (Phase 1 & 2) of SC955: Grove Park and Howard Park.

Neighborhoods impacted by upcoming work (Phase 3) of SC955: Some minor and occasional impact to traffic on Windsor Mill Rd. Otherwise, adjacent neighborhoods will not be impacted.

Approximate completion of project to date is 92%.

### **WORK ON KENNISON AVE**

As of late October 2021, the sewer work (Phase 1) is complete. The connection of the upsized pipe installed in SC955 to the pipe installed in SC921 is complete. Kennison Ave will be paved by Baltimore City Dept of Transportation (BCDOT). All bypass pipes and pumps on Kennison Ave have been removed.

### **UPCOMING WORK IN LEAKIN PARK (PHASE III)**

Work in Leakin Park started in late August 2021. Contractor has completed preliminary surveying in the park and installed orange construction fence. Work on installation of the access road started January 2022 and is projected to complete in April 2022.

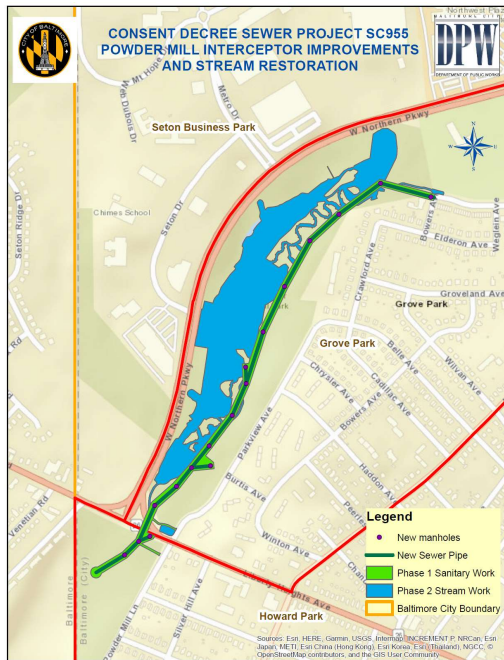


Figure 1: SC955 Phase I & II – Powder Mill Park



Figure 2: SC955 Phase III – Leakin Park

**Work in Progress**

- Powder Mill Park: Stream restoration is complete. Contractor has removed access roads and restored staging area.
- Approx. 1600 ft of 36 in sewer, 2365 ft of 30 in sewer and 140 ft of 8 in sewer have been installed.
- 12 precast manholes have been installed.
- Junction Chamber where the old 27-inch interceptor meets the new interceptor has been completed.
- Tunnel (234 LF) under Liberty Rd is complete. All sewer connecting the tunnel to upstream and downstream manholes completed. The sewer system is functional effective 10-27-2021
- Invasive Vegetation Management in Powder Mill Park is complete.
- Presence of Heavy construction vehicles, equipment and construction noise is expected. The construction hours for this project are between 7:00 AM – 5:00 PM, with occasional instances of overtime work.

**Ongoing Work**

- Work in Leakin Park (Phase III) is ongoing. Installation of the Dead Run Access Road started 01-24-2022 and is approximately 90% complete.
- Planting in Powder Mill Park will take place in the spring of 2022.

We hope this provides insights for upcoming work as we strive to timely and safely complete this project. If you have any questions, you may call Indranil (Neil) Goswami at (410) 396-4700, Monday through Friday, between 8:30 AM and 4:30 PM. Additional information and resources are also available on our website

<https://publicworks.baltimorecity.gov/> .

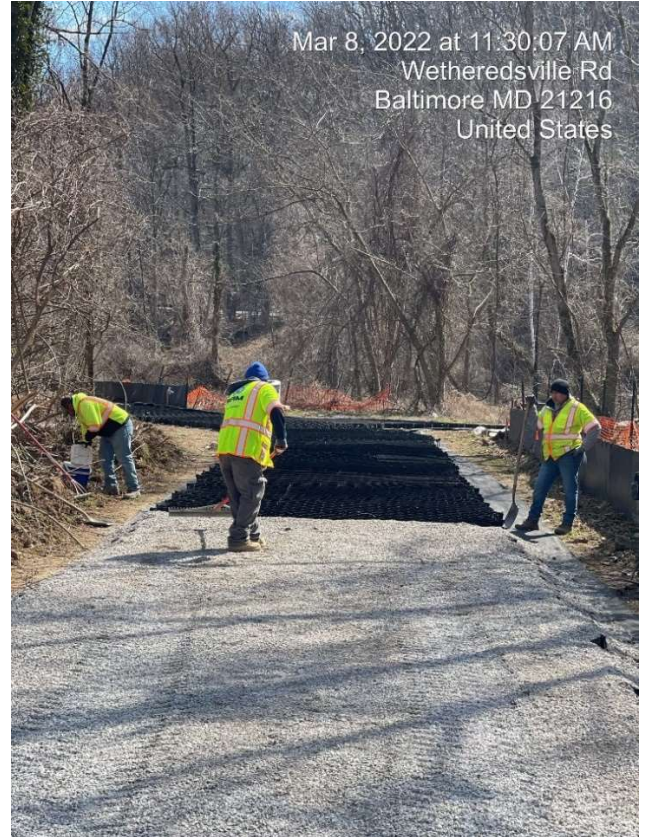
Sincerely,

Angela Cornish  
 Construction Project Supervisor II  
 DPW, Office of Engineering & Construction  
[angela.cornish@baltimorecity.gov](mailto:angela.cornish@baltimorecity.gov)

Below are some pictures to highlight work completed in Powder Mill Park (Phase II) & Leakin Park (Phase III)



**Stream Restoration**



**Phase III Site**



**Installation of Geogrid for Access Road**



**Geogrid being filled in with Stone**