



Sanitary Contract 955 (Powder Mill Interceptor Improvements & Stream Restoration)

July 02, 2020

To whom it may concern,

Below is the project construction status for the month of July

PROJECT LIMITS

Sanitary Contract 955 comprises of three distinct phases of work. Phases I and II are located within the limits of Powder Mill Park with Northern Parkway to the west and Parkview Ave to the east and Elderon Ave to the north and Liberty Rd (MD-26) to the south. See Figure 1.

Phase I involves building a new interceptor sewer and Phase II involves Stream Restoration of the Powder Mill Branch. The construction activities for Phase I and II will occur in parallel.

Phase III is located in Leakin Park, with Windsor Mill Rd to the north and Franklinton Rd to the south. The objective of SC955 Phase III is to build a permanent access road to provide access to the 60-inch sanitary sewer. See Figure 2.



Figure 1: SC955 Phase I & II – Powder Mill Park



Figure 2: SC955 Phase III – Leakin Park

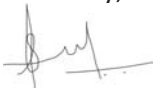
Project SC955 was given the official notice to proceed effective June 1, 2020. The project duration is approximately 18 months, resulting in a finish date of late November 2021.

Work in Progress

- The contractor (Metra Industries) established limit of disturbance (LOD) stakes based on a site survey of Phase I and II (Powder Mill Park). The LOD defines the area within which all land disturbing construction activity is allowed to take place.
- During the last two weeks of June, the subcontractor commenced with vegetation clearing activities within Powder Mill Park. These clearing activities will continue during the month of July.
- Stabilized construction entrances were established in Powder Mill Park to allow heavy equipment access to the site.
- Presence of Heavy Construction vehicles, equipment and construction noise is expected during the construction. The construction hours for this project is between 7:00 AM – 5:00 PM,

We hope this provides insights for upcoming work as we strive to timely and safely complete this project. If you have any questions, you may call Indranil (Neil) Goswami at (410) 396-4700, Monday through Friday, between 8:30 AM and 4:30 PM. Additional information and resources are also available on our website <https://publicworks.baltimorecity.gov/>.

Sincerely,



Mohammed Rahman

Engineer II

DPW, Office of Engineering & Construction

mohammed.rahman@baltimorecity.gov

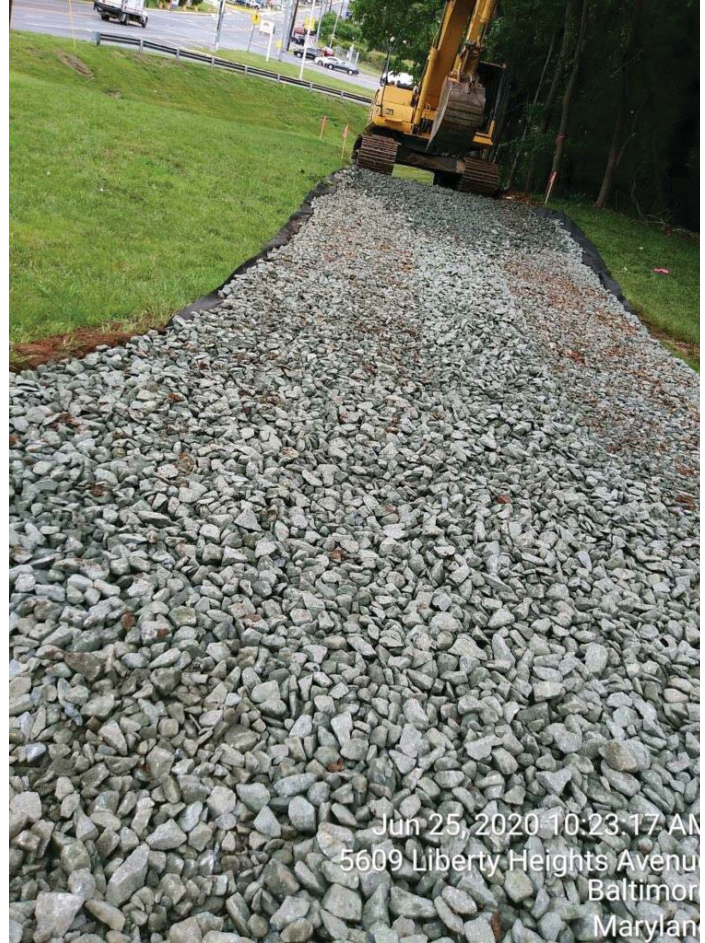
Below are some pictures to highlight work accomplished to-date.



Brush Removal in Powder Mill Park



Installing Mulch Matting



Building Stabilized Construction Entrance



CONSENT DECREE SEWER PROJECT SC955 POWDER MILL INTERCEPTOR IMPROVEMENTS AND STREAM RESTORATION



Seton Business Park

Grove Park

Howard Park

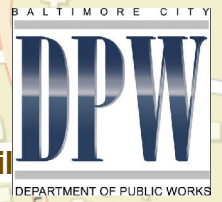
Legend

- New manholes
- New Sewer Pipe
- Phase 1 Sanitary Work
- Phase 2 Stream Work
- Baltimore City Boundary

Sources: Esri, HERE, Garmin, USGS, Intermap, INCREMENT P, NRCan, Esri Japan, METI, Esri China (Hong Kong), Esri Korea, Esri (Thailand), NGCC, © OpenStreetMap contributors, and the GIS User Community



**CONSENT DECREE SEWER PROJECT SC955
POWDER MILL INTERCEPTOR IMPROVEMENTS
AND STREAM RESTORATION
PHASE III DEAD RUN ACCESS ROAD**



Windsor Hill

Wakefield

West Forest Park



Mount Holly

Gwynns Falls/Leakin Park

Fairmont

Franklinton

Legend

-  Existing Trail
-  New Access Road

Sources: Esri, HERE, Garmin, USGS, Intermap, INCREMENT P, NRCan, Esri Japan, METI, Esri China (Hong Kong), Esri Korea, Esri (Thailand), NGCC, © OpenStreetMap contributors, and the GIS User Community



Bernard C 'Jack' Young
Mayor



Matthew W Garbark
Acting Director of Public Works

The Baltimore City Department of Public Works Project Details

SC 955 Powder Mill Interceptor Improvements and Stream Improvements

Project History

- In 2002 the City of Baltimore (City) entered into a Consent Decree with the U.S. Environmental Protection Agency (EPA) and the Maryland Department of the Environment (MDE). A Consent Decree is an agreement made in court by the parties to settle a suit in equity.
- The Consent Decree enables the City to address sewer system deficiencies in a proactive program over a 15-year period. More information on the Consent Decree can be found at: <http://publicworks.baltimorecity.gov/>

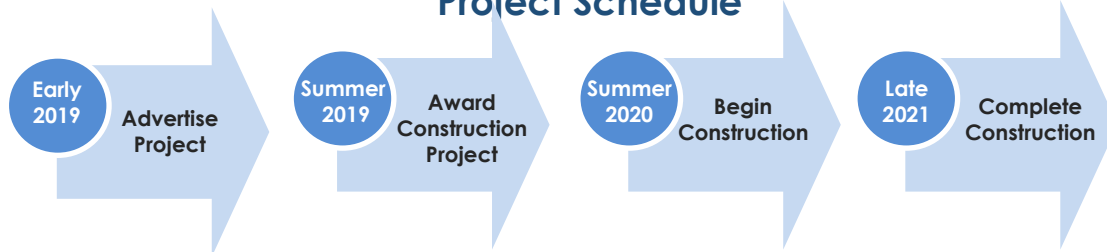
Project Purpose

- To bring the City into long-term compliance with the Clean Water Act (1972)
- To comply with the conditions of the City's Consent Decree with the U.S. EPA and MDE
- To repair a sewer system that is up to 100 years old
- To improve sewage flows and pipe capacity
- To reduce/eliminate sewer overflows
- To eliminate street closures due to sewer pipe collapses
- To improve water quality in streams
- To prevent sewer back-ups into private property

Project Activities

- Approximately 705 linear ft. (LF) of Cured-In-Place Pipe (CIPP) lining;
- Approximately 4,400 linear ft. (LF) of replacement of sanitary sewers by open cut method.
- Approximately 260 vertical linear feet of new sanitary sewer manholes.
- Approximately 3,900 LF of stream restoration/stabilization
- Approximately 2,700 LF of a permanent access road
- Installation of temporary access roads (varying types) for accessing sewers and/or manholes in non-paved areas.

Project Schedule



Project Manager: Mohammed Rahman **Phone:** (410) 396-4700 **Email :** mohammed.rahman@baltimorecity.gov