



Sanitary Contract 955 (Powder Mill Interceptor Improvements & Stream Restoration)

November 1, 2020

To whom it may concern,

Below is the project construction status of SC955:

PROJECT LIMITS

Sanitary Contract 955 comprises of three distinct phases of work. Phases I and II are located within the limits of Powder Mill Park with Northern Parkway to the west and Parkview Ave to the east and Elderon Ave to the north and Liberty Rd (MD-26) to the south. See Figure 1.

Phase I involves building a new interceptor sewer and Phase II involves Stream Restoration of the Powder Mill Branch. Activities for Phase I and II will occur in parallel.

Phase III is located in Leakin Park, with Windsor Mill Rd to the north and Franklintown Rd to the south. The objective of SC955 Phase III is to build a permanent access road to provide access to the 60 in sanitary sewer. See Figure 2.

Neighborhoods impacted by current work (Phase 1 & 2) of SC955: Grove Park. Howard Park

Approximate completion of project to date is 28%

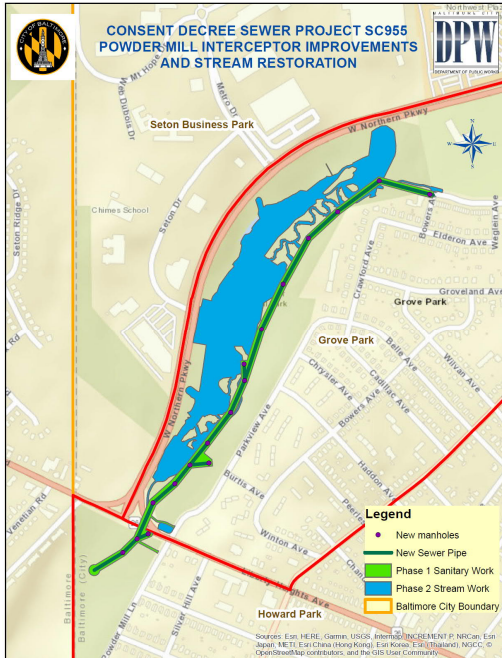


Figure 1: SC955 Phase I & II – Powder Mill Park



Figure 2: SC955 Phase III – Leakin Park

Project SC955 was given the official notice to proceed effective June 1, 2020. The project duration is approximately 18 months, resulting in a finish date of late November 2021.

Work in Progress

- Thousands of feet of tree protection fence and super silt fence have been installed to protect the environment and prevent sediment transport from runoff.
- Clearing for the sewer work, Phase 1, is drawing to a close however the clearing for the stream restoration, Phase 2, is ongoing.
- Approximately 1000 ft of 36 in sewer has been installed. 30 in diameter sewer being installed.
- On Liberty Rd, settlement monitoring grid has been laid out and baseline data taken
- Launch pit for the tunnel (using a jack and bore procedure) under Liberty Rd has been prepared. Tunneling started on the 27th of October
- Base slab and walls poured for junction Chamber where the old 27 inch interceptor meets the new interceptor
- Replanting of trees will not occur until 2021 due to ongoing construction activities.
- Presence of Heavy construction vehicles, equipment and construction noise is expected. The construction hours for this project are between 7:00 AM – 5:00 PM, with occasional instances of overtime work.

We hope this provides insights for upcoming work as we strive to timely and safely complete this project. If you have any questions, you may call Indranil (Neil) Goswami at (410) 396-4700, Monday through Friday, between 8:30 AM and 4:30 PM. Additional information and resources are also available on our website

<https://publicworks.baltimorecity.gov/> .

Sincerely,

Angela Cornish
 Construction Project Supervisor II
 DPW, Office of Engineering & Construction
angela.cornish@baltimorecity.gov

Below are some pictures to highlight work ongoing.



Poured Base Slab and Walls of Junction Chamber



Phase II Streamwork