



A collaboration between Baltimore City and Baltimore County to identify the material of the water service line to your home.

WATER SERVICE LINE MATERIAL IDENTIFICATION

WE NEED YOUR HELP!

The Baltimore Service Line Partnership is developing an inventory to identify service lines that were constructed with lead. This effort is part of a nationwide initiative required under the U.S. Environmental Protection Agency's revisions to the Lead and Copper Rule.

Extensive research to identify service line materials throughout the system is underway. The most common materials are copper and galvanized iron pipes. While our current records do not show that we have service lines constructed with lead in Baltimore, there is still a significant number of service lines where we don't know what materials have been used.

If you've been directed to take this survey, that means your address has indicated your service line material has not yet been verified.

Please help us by verifying and reporting the material of your service line.

In the unlikely event that lead is identified as your service line material, there is no immediate health concern. Water chemistry throughout the distribution system is carefully managed to minimize lead from leaching into the drinking water. [Click here](#) for more information on ways to reduce lead exposure.

INSTRUCTIONS FOR WATER SERVICE LINE MATERIAL IDENTIFICATION & REPORTING

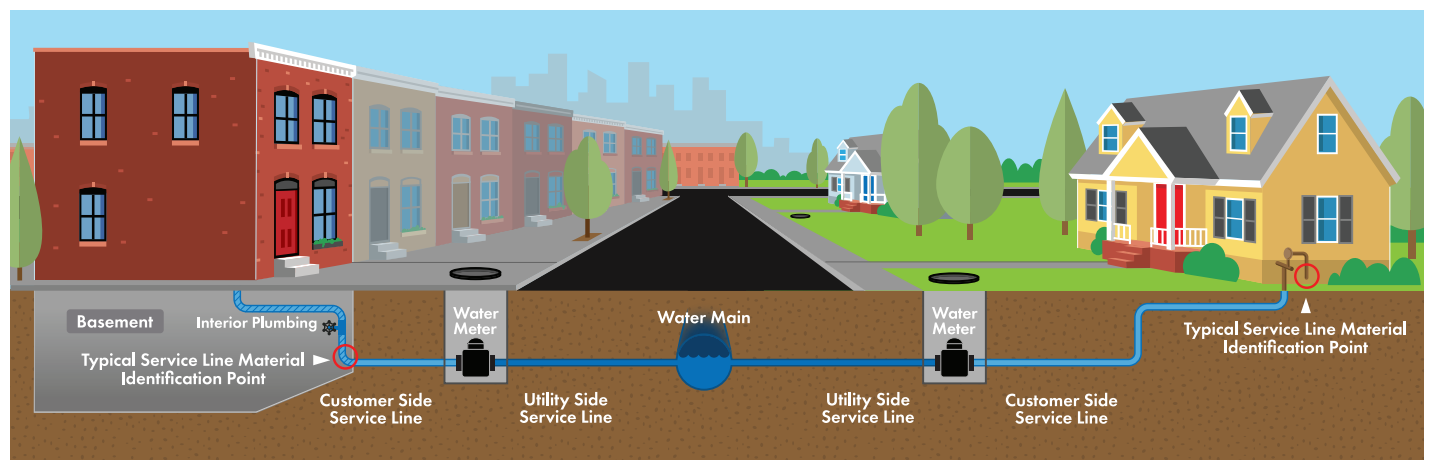
The **8 steps** below provide guidance on how to locate your water service line and accurately identify its material.

Scratch and Magnet Test

Step 1. Locate Your Service Line.

Your service line can be located where it enters your home in your basement or utility area.

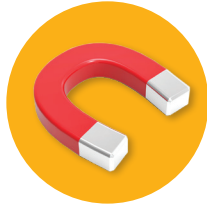
A service line is an underground pipe that connects your home to the water main.



Step 2. Collect the following items for identification:



Key



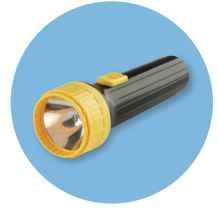
Magnet



Coins



Cell Phone or Camera



Flashlight

Step 3. Using the key, coin, or other tool, lightly scratch your water service line as close to the wall as possible, where it enters the home. Note the color of the pipe when scratched.

Step 4. Place a magnet on the pipe. If it does not stick, note this.

Step 5. Tap the pipe with a coin.

Step 6. Take a picture of your water service line and the results of the scratch test.

Step 7. Fill out the required fields in the survey.

Scan the QR code or go to the link to take the survey and upload your pictures.




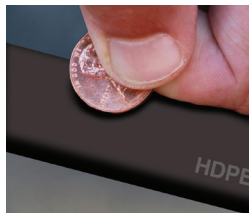


Click here to take survey

Step 8. Submit the survey.

For questions **call 311.**

Identifying Service Line Material

				
	Copper	Galvanized	Lead	Plastic/HDPE/PVC
Scratch Result	Copper or orange	Dull gray	Shiny silver	Matches pipe surface
Magnet Result	No	Yes	No	No
Tapping Result	Metallic, ringing noise	Metallic, ringing noise	Dull noise	Dull, plastic noise