

DEPARTMENT OF PUBLIC WORKS

Sanitary Sewer Project Facts



SC #985:

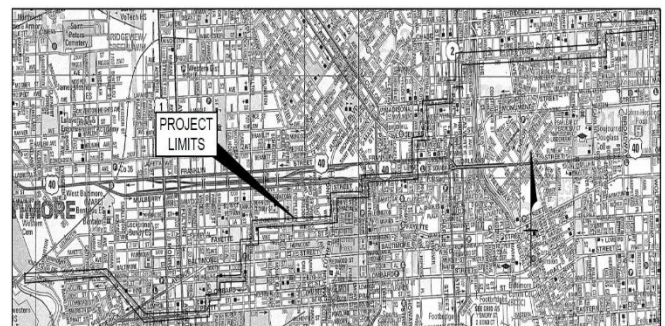
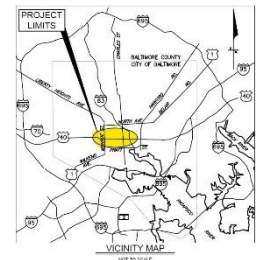
Rehabilitation of the High Level Interceptor

Project Purpose

- To rehabilitate a sewer system that is up to 100 years old which has been prone to sinkhole failures
- To reroute local flows from direct connection into the Interceptor sewer in the Downtown community thus facilitating maintenance operations

The High-Level Interceptor is the primary sewerage conveyance for several sewer sheds on the western portion of the City. This utility transmits sewerage to the Back River Wastewater Treatment facility and structural rehabilitation is necessary to reduce the probability of further failures in the future

Project Area Map



LOCATION MAP
SCALE: 1" = 200'
CREDIT: ACC THE MAP PEOPLE
BY PERMISSION PLAN NO. 20101018

Project History

Following a 2008 study of the High Level Interceptor Sewershed, a series of sinkholes along portions of the High Level Interceptor required costly emergency repairs. These sinkholes occurred primarily in areas of the interceptor that had been hand-tunneled through rock during installation. The installation methods and unreinforced cast-in place concrete quality resulted in longitudinal failure at the crown of the pipe. This was problematic for the City of Baltimore because of their size and location at busy intersections in the Mount Vernon area.

An on-call contract was used to perform emergency repair on the Interceptor using cured-in-place pipe (CIPP) technology. Following the emergency sinkhole repairs, structural rehabilitation of the remaining un-lined portion of the interceptor was prioritized to reduce the probability of further failures in the system.

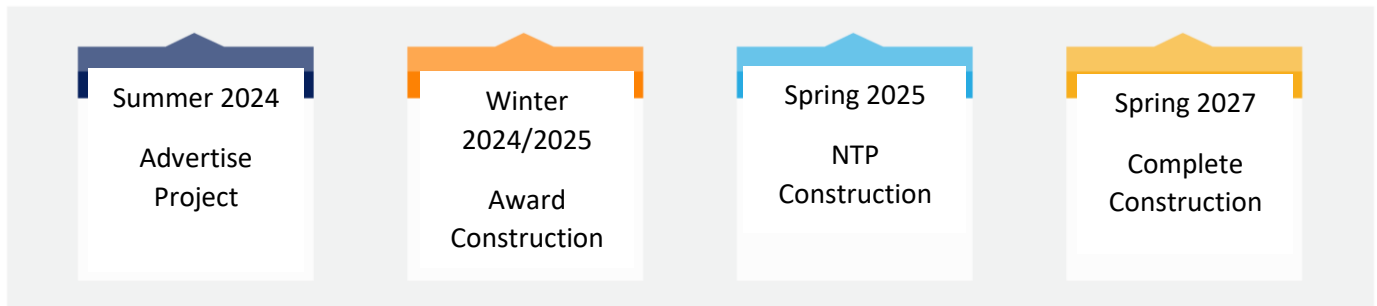
DEPARTMENT OF PUBLIC WORKS

Sanitary Sewer Project Facts



SC #985: Rehabilitation of the High Level Interceptor

Project Schedule

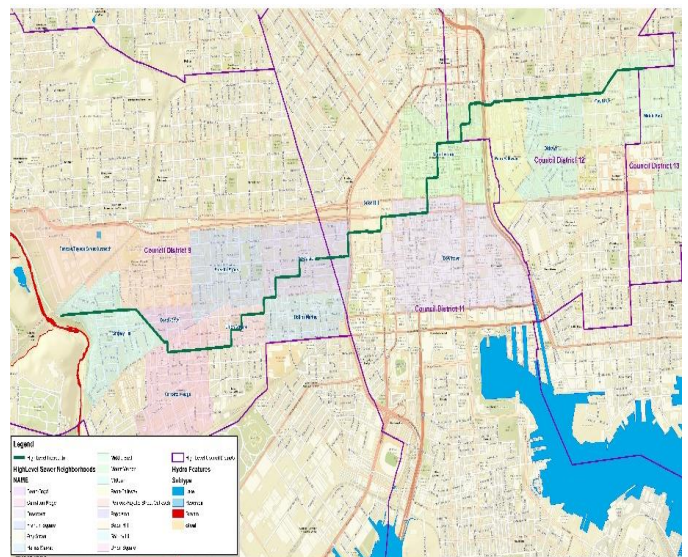


Project Updates

This project will have impacts to the 9th, 11th, 12th and 13th Councilmanic districts which includes 17 community associations as shown in the map below.

Project Activities

- Rehabilitation of approx. 11,300 LF of Sewer via CIPP lining ranging from 33" to 82" diameter
- Rehabilitation of approx. 5,200 LF of sewer via Segmental Slip Lining method
- Installation of 8,400 LF of PVC sewer including extension of sewer house connections
- Rehabilitation/Replacement of approximately 73 manholes
- Installation of 28 new Manholes



If you have any project-related questions, please call (410) 396-4700, Monday through Friday, between 8:30 AM and 4:30 PM. Additional information and resources are also available on our website <https://publicworks.baltimorecity.gov/>